



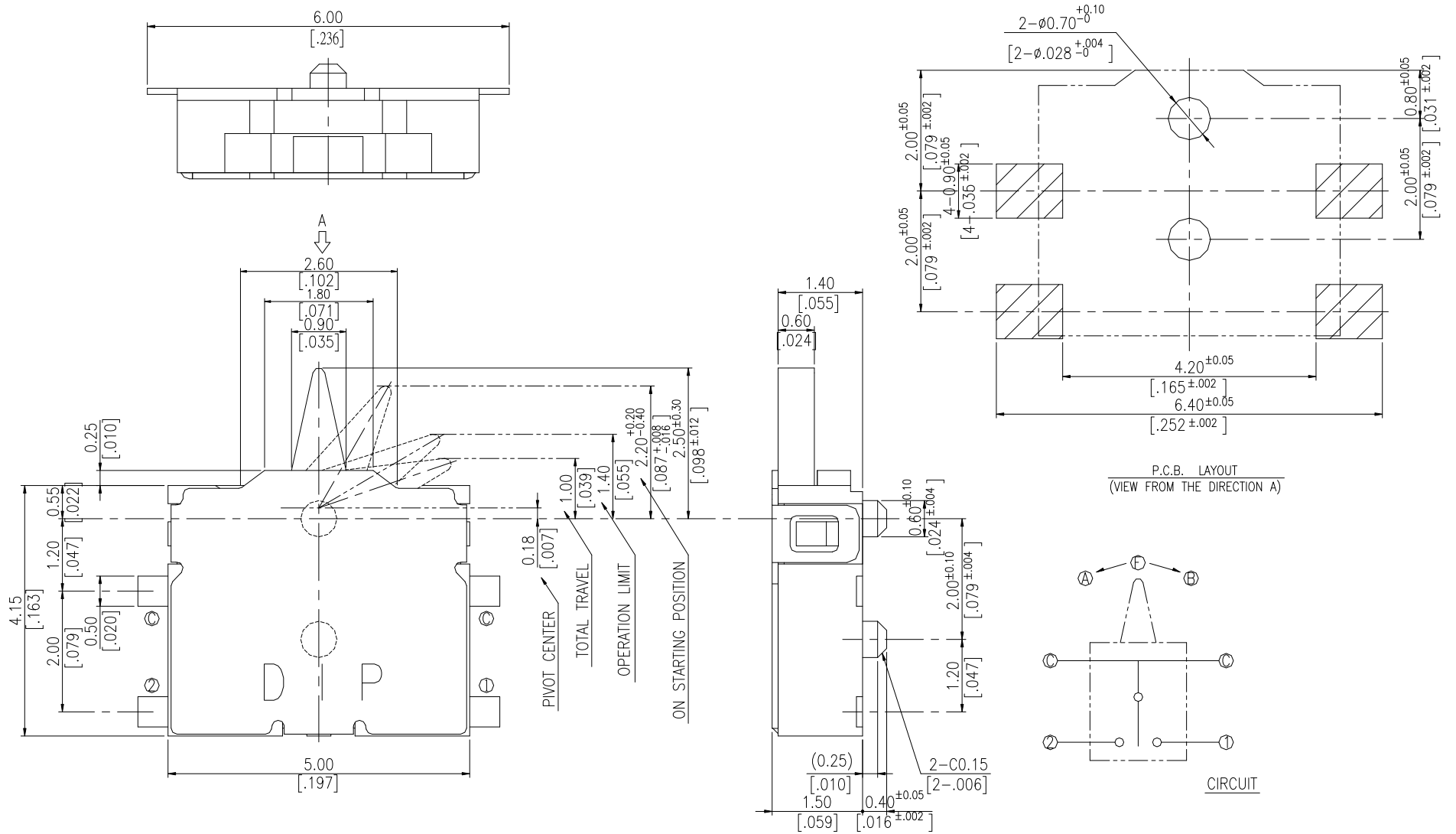
DIPTRONICS MANUFACTURING INC.

DTE SERIES



DIMENSIONS

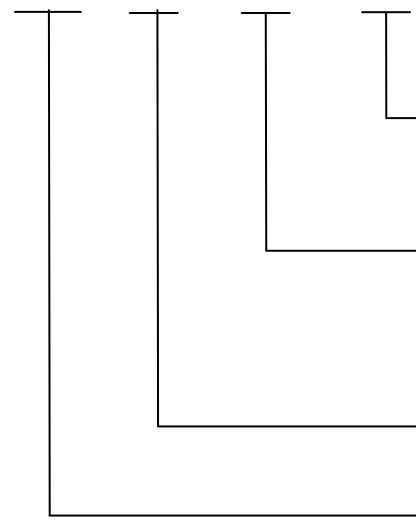
DTE



General Tolerance : $\pm 0.2\text{mm}$

HOW TO ORDER

DTE - P - □ - □



Package :
T/R = Tape & Reel

Soldering :
V = RoHS & Lead Free
Q=Halogen Free

with pilot

Detector Switch

SPECIFICATION

△MECHANICAL

Operation Force: 30gf max.

Stroke: 1.5 ± 0.3 mm

Operation Temperature: -10°C to $+60^{\circ}\text{C}$

Storage Temperature: -20°C to $+70^{\circ}\text{C}$

△ELECTRICAL

Electrical Life: 100,000 cycles

Rating: 10mA, 5VDC

Contact Resistance: 500mΩ max.

Insulation Resistance: 100MΩ min.

Dielectric Strength: 100VAC/ minute

MATERIAL

△STEM: UL 94V-0 LCP High-temp thermoplastic

Color: Black

△BASE: NYLON UL 94V-0 High-temp thermoplastic

Color: Black

△COVER : Stainless Steel

△CONTACT : Phosphor Bronze with silver plating

△TERMINAL : Phosphor Bronze with silver plating

△SLIDE : NYLON UL 94V-0 High-temp thermoplastic

Color: Black

△SPRING : Stainless Steel

SOLDERING PROCESS

For best results, please follow these recommend conditions :

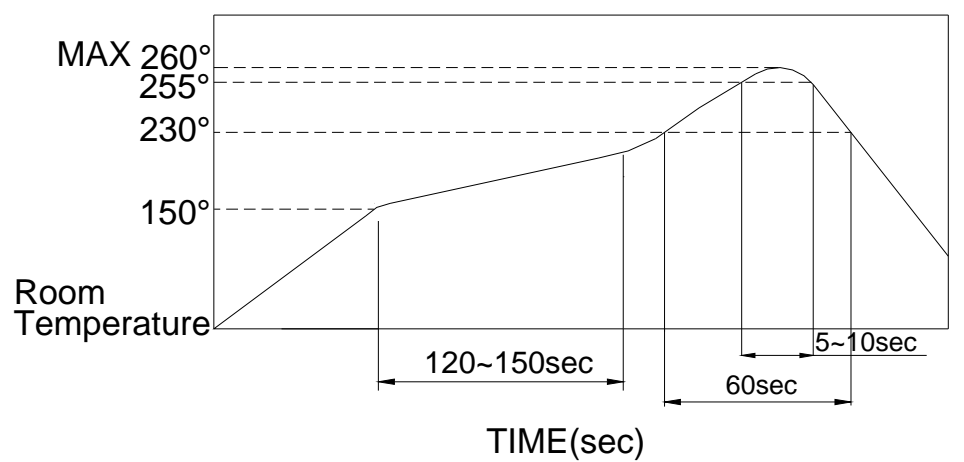
△HAND SOLDERING : Use a soldering iron of 30 watts, controlled at 608°F (320°C) approximately 2 seconds.

△WAVE SOLDERING: Recommended solder temperature at 500°F (260°C) max. 5 seconds for through hole type.

△REFLOW SOLDERING: When applying reflow soldering, the peak temperature or the reflow oven should be set at 260°C max.

△Make sure that there is no flux rise on the surface of The PCB.

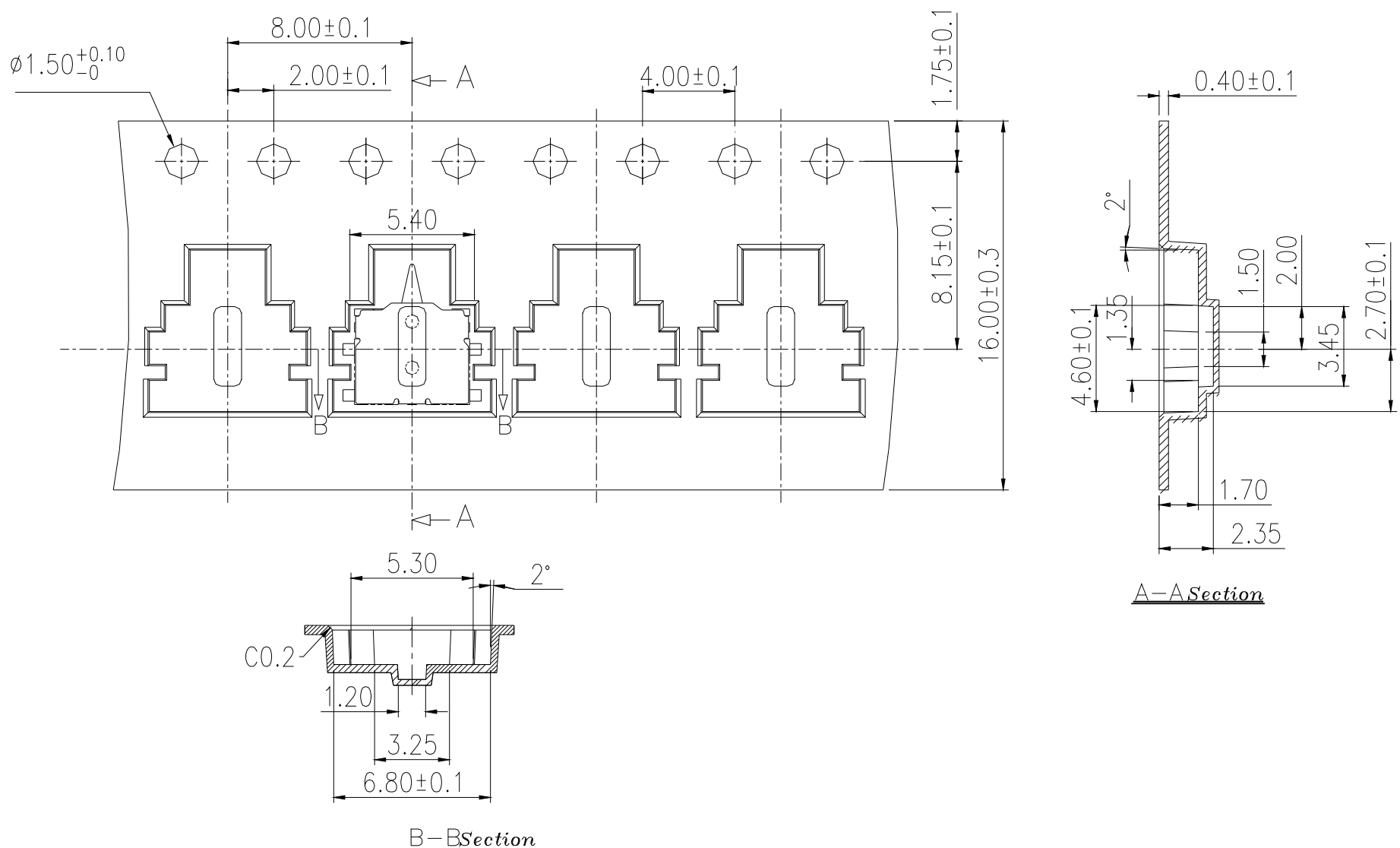
△Reflow Temperature Profile:



PACKING

Part Number	Number Per Tube	Number Per Reel
DTE-P-V		3800

DTE-P REEL



General Tolerance : ± 0.1 mm